

Lower Elmhurst Neighborhood

(Between 81st-92nd Aves and International Blvd.– G St.)

2014



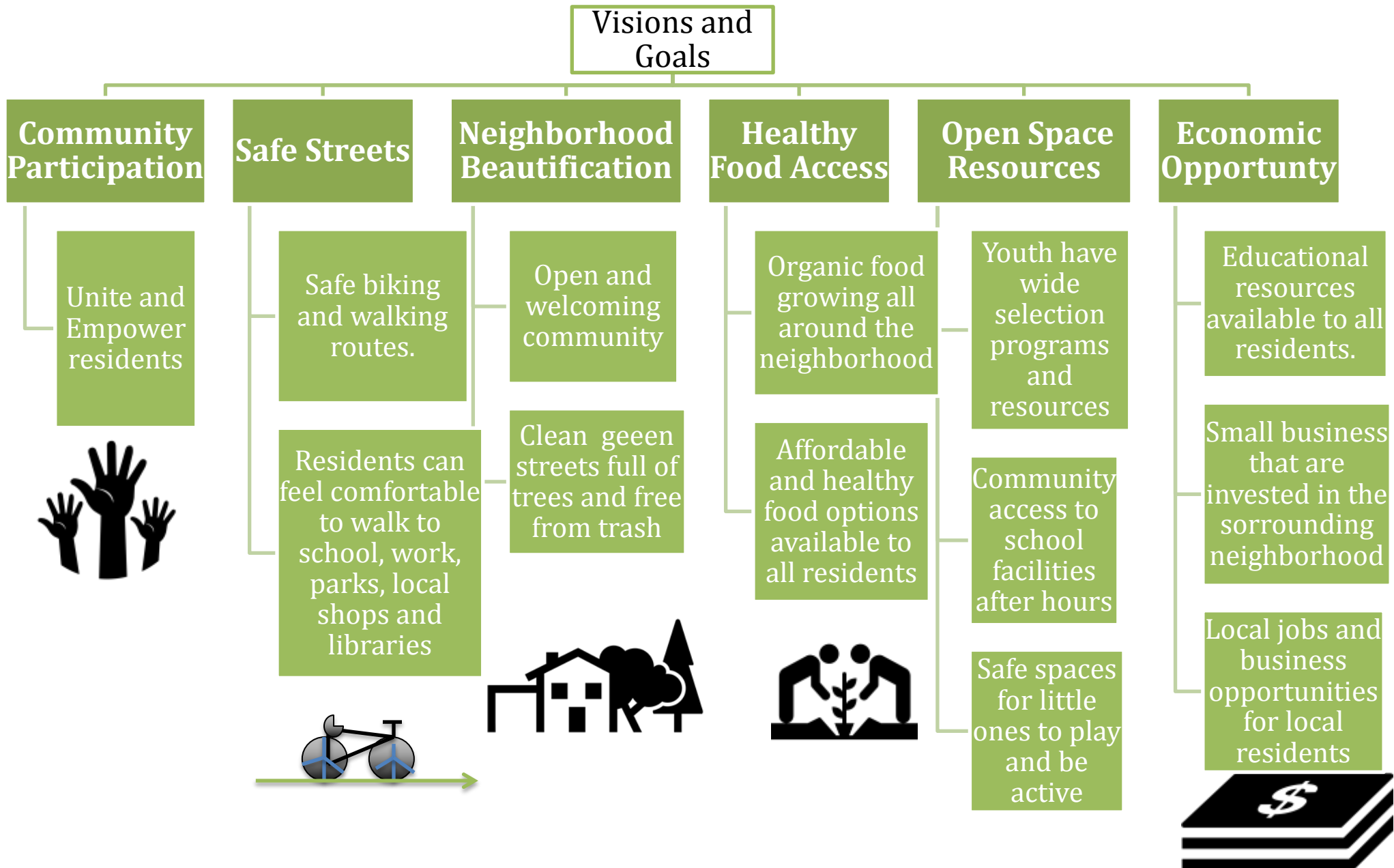
East Oakland, Elmhurst Neighborhood

Plan Summary

The Elmhurst Neighborhood Plan is intended to create a healthy and safe neighborhood. This plan serves as a living document in order to achieve community improvement. This plan hopes to improve many levels of health such as physical health, economic health, social health, and environmental health. *Health is about all the parts working together and being connected as a whole.* It is a community that works, that has a strong identity and has deep resident engagement and participation and mutual support.

Visions and Goals

These vision statements reflect the goals that have motivated the process of this plan. They were expressed in initial community meetings; they are also very basic to quality of life of our neighborhoods and the idea of a healthy neighborhood.



1. Building Partnership	<ul style="list-style-type: none">➤ Meet with other organization and PTA's➤ Hope has partnered with various organizations including:<ul style="list-style-type: none">○ Communities For A Better Environemnt (CBE),○ Acta Non Verba (ANV),○ Bike EastBay (BEB),○ Block by Block Organization Network (BBBON),○ Rise Elementary,○ Urban Releaf
2. Community Outreach and Engagement	<ul style="list-style-type: none">➤ General community meetings, recruit residents.
3. Neighborhood Mapping and Assessment	<ul style="list-style-type: none">➤ Neighborhood Mapping by quadrants conducted by local residents and students.
4. Drafting a Map & a Plan	<ul style="list-style-type: none">➤ Residents and community groups combine mapping information and develop action items.➤ Create interactive Google Mapping Document to reflect plan findings and action steps.➤ Create draft plan document to serve as a tool to present to city and community partners.
5. Gathering Resources and Implementation	<ul style="list-style-type: none">➤ Group work to gather resources to move neighborhood projects forward.➤ Tree Planting projects on 82nd, 85th and 86th
6. Community Feedback	<ul style="list-style-type: none">➤ Raise awareness and build community involvement plan implmentation.➤ Gather feedback on draft plan document. Continue to build resident involvement and plan implementaton.➤ Tree Planting projects.

Neighborhood Mapping Key Findings

Assets



- **Strong Civic Participation**
 - Good Neighbors/ Diversity
 - Rich cultural community
- **Civic & Open Resources**
 - Several Institutions (2 Schools & 2 City Libraries)
 - walkable community
- **Educational & Enrichment Resources**
- **Neighborhood Has Potential for Beautification**
 - Planter strips on many sidewalks



Challenges



- Speeding traffic
- Dumping
- Broken sidewalks and Streets
- Lack of trees/greenery
- Trees and planter strips not maintained
- Lack of Community Resource
- Air Pollution



Opportunities



- **Healthy Transportation**
 - Access to BART
 - Tassafaronga to 81st library
- **Healthy Food Access**
 - Healthy Food Options
- **Beautiful Community**
 - Traffic calming features ex: Traffic Circles
 - Open and walkable community
 - Clean and green streets
 - Tree Planting
- **Anti-Dumping Campaign**
- **Safe Places**



ACTION STEPS

Civic Participation

SHORT TERM (0-2 YRS)

- Involve more community residents

MEDIUM TERM (2-5 YRS)

- Work with existing organizations to create a local neighborhood advisory committee

LONG TERM (5-10YRS)

- Neighborhood planning has direct communication with planning staff

Safe Streets

SHORT TERM (0-2 YRS)

- Create a model design for streets that are for pedestrians and bicycles
- Create Traffic Circles through community process

MEDIUM TERM (2-5 YRS)

- Street and Sidewalk repairs
- Install traffic calming features
- Repaint bike and pedestrian priority streets

LONG TERM (5-10YRS)

Neighborhood Beautification & Greening

SHORT TERM (0-2 YRS)

- Plant Street Trees & sidewalk planter strips
- Repair broken street lights
- Begin Anti-Dumping Campaign

MEDIUM TERM (2-5 YRS)

- Anti-Dumping Campaign
- Tree Planting

LONG TERM (5-10YRS)

Healthy Food Access

SHORT TERM (0-2 YRS)

- Farmers markets & healthy food at local stores
- Grow food in a community garden and on sidewalks
- Support Acta Non Verba's farmstand

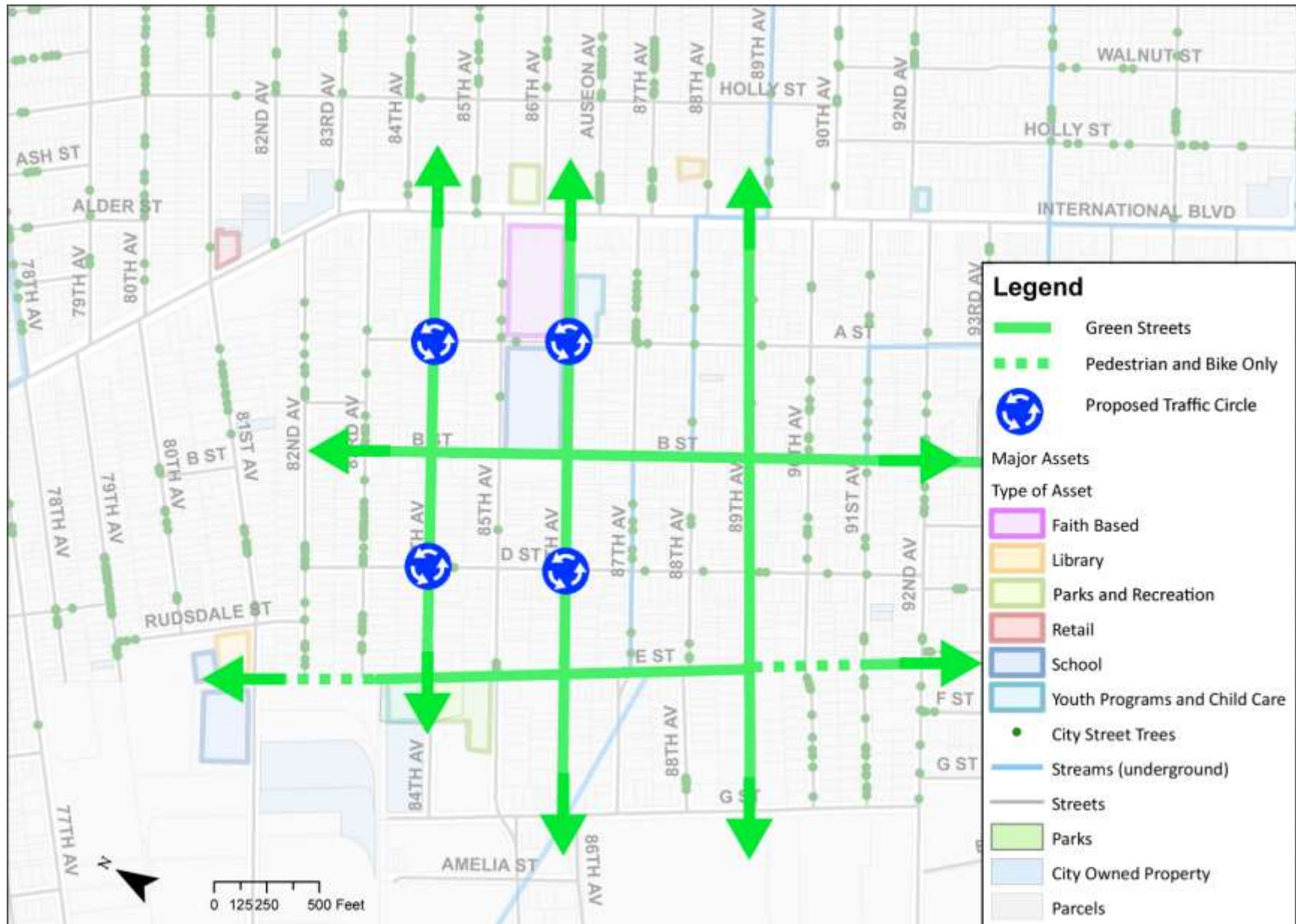
MEDIUM TERM (2-5 YRS)

- Plant fruit trees and edible plants
- Weekly farmers market in the neighborhood
- Healthy foods in more corner stores
- Community led healthy food enterprises

LONG TERM (5-10YRS)

-

PROPOSED GREEN STREETS NETWORK: PEDESTRIAN & BIKE PRIORITY ROUTES WITH TREES & PLANTINGS



Sources: HOPE Collaborative Neighborhood Mapping Project, City of Oakland Department of Community and Economic Development, City of Oakland Street Tree Database

Current Community Projects

Summer 2014

Civic Participation

Neighborhood Plan Outreach – Communities for a Better Environment (CBE)

- ❖ 6 Neighborhood Plan Leaders will conduct bi-lingual, strategic outreach to inform people and get them involved in the neighborhood planning process
- ❖ Culmination in a Town Hall meeting in Fall 2014 to affirm a shared neighborhood vision and plan

Anti-Dumping, Beautification & Greening

WE ACT: Neighborhood Beautification – Acorn Woodland Elementary School

- ❖ Students & parents will pick up trash, paint over graffiti, and install plantings around their school (81st Ave & Rudsdale).

G Street Transformation Project – Block By Block Organizing Network – District 7

- ❖ Goal is to end illegal dumping on G Street between 85th & 92nd Aves
- ❖ Outreach to businesses & residents to install motion lights, cameras, planters, trees, & signs to discourage dumping.
- ❖ Celebration to publicize transformation of G Street.

Community Greening Project – Urban Releaf

- ❖ Plant trees in the neighborhood & check up on them over 3yrs

Safe Streets

Peace Banner Campaign – Acta Non Verba: Youth Urban Farm

- ❖ Create “Peace Banners” developed through partnership with youth & families of children lost to violence
- ❖ Develop a tagline & website that links residents to organizations serving the neighborhood that do peace promoting work in addition to job postings, resources, workshops, events, etc.

Traffic Circle Program – Bike East Bay

- ❖ Working on implementation plan for building community-developed traffic circles in the neighborhood
- ❖ Long-term goal is more affordable, community centered traffic circles in neighborhood to calm traffic, increase safety for people to walk and bike, and add greenery to neighborhood

Healthy Food Access

Seeds at School, Harvest at Home – RISE Community School

- ❖ Start a greenhouse/nursery program at school for students to grow fruit, vegetable, & herb plants from seed.
- ❖ Seedlings will be planted in school garden, at home, and in the neighborhood.

Built Environment Action Team/Elmhurst Neighborhood Planning Initiative

Current Member Organizations as of 04/2014

Local Resident Leaders
Acorn Woodland Elementary School
Acta Non Verba: Youth Urban Farm
Bike East Bay
Block By Block Organizing Network District 7
Communities for a Better Environment
City of Oakland Department of Neighborhood Investment
HOPE Collaborative - convener
RISE Community School
Urban Releaf

Neighborhood Mapping Team:

Christina, Esther, Gabrielle, Acacia, Manny, Eliezer, Jessica, Kelly, Cynthia, Winfred, Victoria, Pedro, Marian, and Kate Gallagher and RISE Community School students

Additional Neighborhood Partners:

Reverend Buford (Allen Temple Church)
Regina Jackson (EOYDC)
Principal Connie Tillman (RISE Community School)
Sheryl Walton, Block By Block Organizing Network

Additional Supporters:

Hagu Solomon & Tim Bevins (Global Green)
Edith Guillen (City of Oakland Neighborhood Services, NCPC 33x/34y)
Joe DeVries (City of Oakland Neighborhood Services)

Elmhurst Neighborhood Planning Initiative Funders:

WK Kellogg Foundation
The California Endowment - East Oakland Building Healthy Communities Initiative
Kaiser Permanente Northern California Community Benefits Program
US Environmental Protection Agency
SF Foundation

Get Involved!

CONTACT:

Angela Hadwin
Project Associate
HOPE Collaborative
221 Oak St, Suite D
Oakland, CA 94607

Phone: (510) 444-4221
Email:
angela@hopecollaborative.net

www.hopecollaborative.net

